

HERBOLD



Herbold Single-shaft Shredder The New Generation of the EWS 45 series

The Herbold single-shaft shredder is a further development of the HR shredder series for high throughputs and difficult applications.



Fig.1: EWS 45/120

Drive system

- no gear box, trouble-free drive via countershaft drive; thus optimum protection against damages caused by foreign bodies
- energy saving due to the high centrifugal mass of the pulley in case of peak loads
- better efficiency compared to gear-box drives
- easy speed changes

Cutting system

- rotor drum with variable knife configuration in cartridges, easy to change
- adjustable stator knives
- rotor and stator knives made from extra wear-resistant materials
- oversized self-aligning roller bearings in pillow block housings, completely outside and separated from the grinding chamber
- optionally the rotor is available with water cooling



Fig. 2: Rotor with variable knife configuration

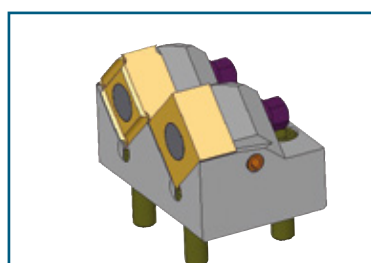


Fig. 3: 2-knife cartridges

Shredder design

- solid welded steel construction, designed for heavy-duty applications
- grinding chamber exchangeable, in case of wear or serious damage, it is possible to put the shredder into operation again with an exchange housing within an extremely short period of time
- hydraulic ram in heavy-duty design with anti-wear plates
- PLC with programmable ram action
- hydraulically operated drop-down screen cradle, easy screen change
- excellent access for maintenance works, knife change, hydraulic feeding system

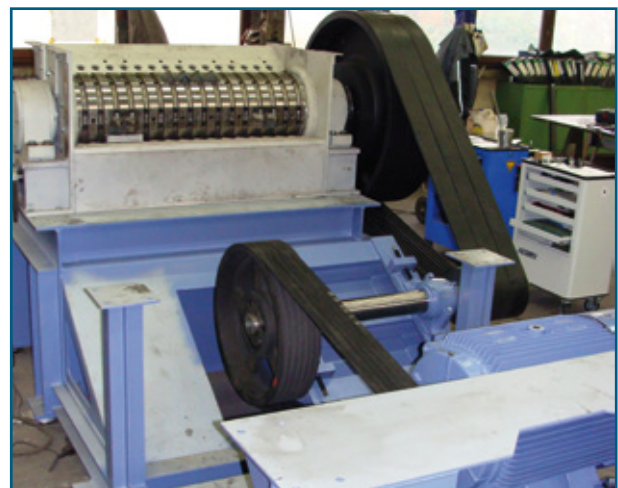


Fig. 4: V-belt drive by countershaft drive



Fig. 5: Screen support hydraulically controlled, convenient, fast screen change

Technical data of the Herbold shredder of the EWS series

EWS 45/120

Weight	approx. 7000 kg (15,400 lbs)
Stroke length	standard 1300 mm (51.2") optional 2500 mm (98.4")
Rotor diameter	450 mm (18")
Rotor knives	variable configuration 20 - 60
Rotor knives	useable on all 4 sides
Stator knife rows	2 (2 x 2 knife supports)
Stator knives	useable on 2 sides
Screen insert	according to the application
Drive	45 - 90 kW (60 - 125 HP)
Hydraulic ram	7.5 kW (10 HP)

EWS 45/160

Weight	approx. 9500 kg (20,900 lbs)
Stroke length	standard 1500 mm (59.1") optional 2500 mm (98.4")
Rotor diameter	450 mm (18")
Rotor knives	variable configuration 30 - 80
Rotor knives	useable on all 4 sides
Stator knife rows	2 (3 x 2 knife supports)
Stator knives	useable on 2 sides
Screen insert	according to the application
Drive	55 - 132 kW (75 - 180 HP)
Hydraulic ram	7.5 kW (10 HP)

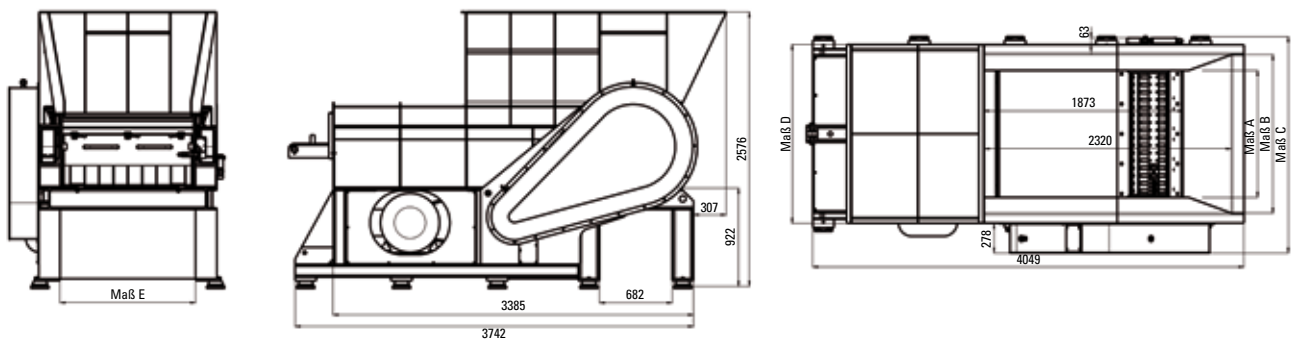


Fig. 6: EWS 45/120
with standard stroke length

Dimensions

Model	Size A	Size B	Size C	Size D	Size E
45/120	1187 mm (47")	1483 mm (58.5")	2023 mm (80")	1672 mm (66")	1272 mm (50")
45/160	1587 mm (62.5")	1883 mm (74")	2423 mm (95.5")	2072 mm (81.5")	1672 mm (66")



Our product range

- Granulators
- Pulverizing Systems
- Shredders
- Hammer Mills
- HOG Shredders
- Guillotines
- Washing Systems
- Plastcompactors

Herbold Meckesheim GmbH

Industriestr. 33
74909 Meckesheim
Postfach 1218
74908 Meckesheim
Germany
Tel.: + 49 (0) 6226/932-0
Fax: + 49 (0) 6226/932-495
E-Mail: herbold@herbold.com
Internet: www.herbold.com

Our subsidiary:

Herbold Meckesheim USA Resource Recycling Systems Inc.

130 Industrial Drive
North Smithfield, RI 02896, USA
P.O. Box 239
Slatersville, RI 02876, USA
Tel.: +1 401 597/5500
Toll-Free 888/612 RRSI (7774)
Fax: +1 401 597/5535
E-mail: info@herboldusa.com
Web: www.herboldusa.com