

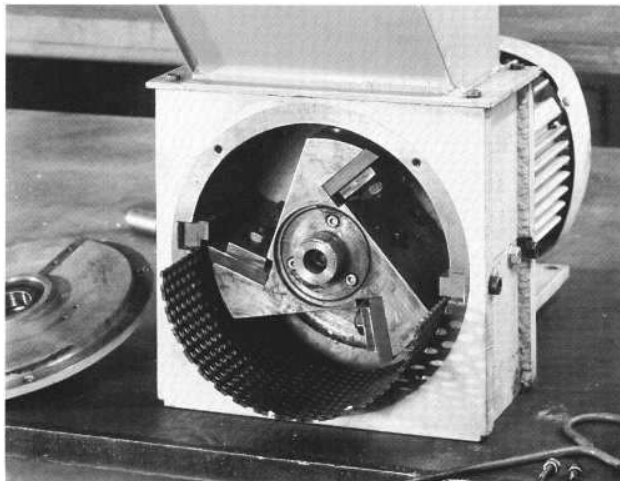
Small granulator SML 20/10 for laboratory applications and the size reduction of small pieces of waste material



Housing: Sturdy welded construction, easily accessible through a removable grinding chamber cover positioned on the front side of the unit. The unit is equipped with 2 bed knives fitted in the block with diagonal cutting blades. The rotor cutting blades are positioned in such a way that a double cross cutting action is achieved.

Rotor: This is a half open, adjustable 3-blade rotor. The rotor shaft is equipped with adjusting screws to simplify rotor blade adjustment.

Drive: The unit is driven by a 3-phase motor flanged onto the unit. The rotor runs at a low speed (rotor periphery speed: 10.3 m/s) to reduce the amount of fine particles, noise and temperature during operation.



SML 20/10 open



SML 20/10

Screen: The screen which is semi-circular is positioned beneath the rotor. The hole size of the screen depends on the granule size required. Standard screens are available with diameters from 4 to 12 mm.

Mountings: The standard drive motor is equipped with flanged feet which can be fitted directly to a work top or a mounting frame.

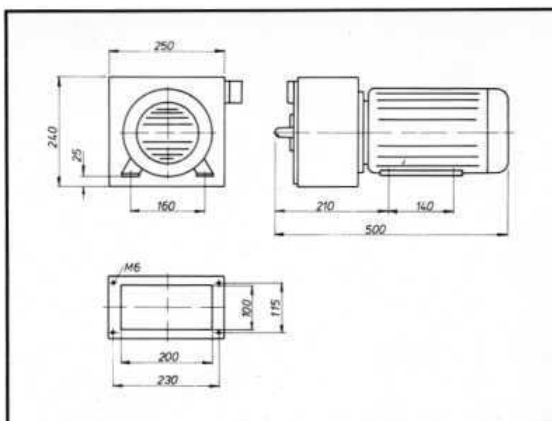
Safety measures: The grinding chamber cover is fitted with special limit switches as demanded by the German Association of Chemical Industries (BG Chemie).

Technical specifications:

Feed/delivery opening:	200 x 100 mm
Quantity of rotor blades:	3
Quantity of stator blades:	2
Drive motor (3 phases):	2.2 kW, 1000 rpm, 380 V
Weight without accessories:	approx. 115 kg

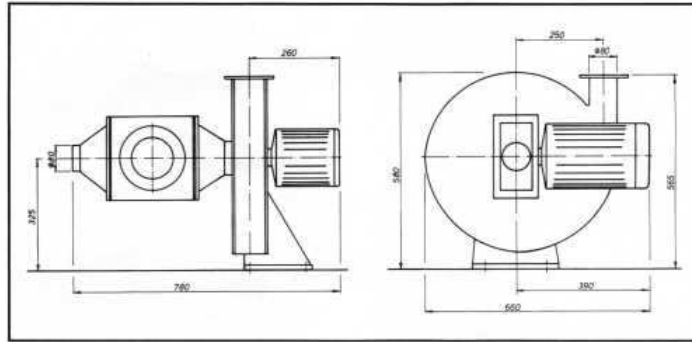
Special accessories:

- Feed hopper
- Granule storage container
- Mounting frame

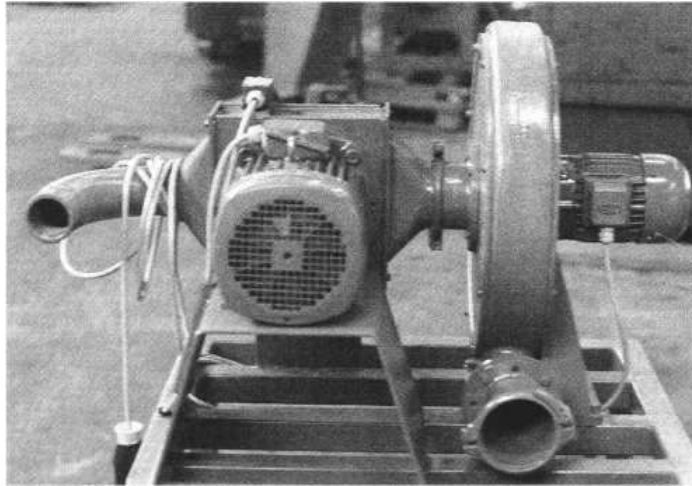


The unit can also be supplied with a cyclone extraction fan, e.g. for flat film edge strip recycling.

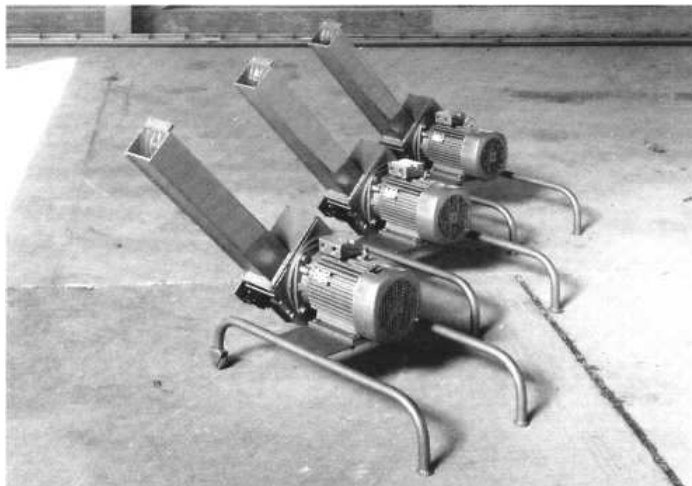
Brochures are available on request.



Special execution SML 20/10 AD adapted to the size reduction of flat film edge strips



Special execution for profiles and tubes waste



Our product range

- Granulators
- Pulverizing Systems
- Shredders
- Hammer Mills
- HOG Shredders
- Guillotines
- Washing Systems
- Plastcompactors

Herbold Meckesheim GmbH

Industriestr. 33
D-74909 Meckesheim
Postfach 1218
D-74908 Meckesheim
Tel.: + 49 (0) 6226/932-0
Fax: + 49 (0) 6226/932-495
E-Mail: Herbold@Herbold.com
Internet: www.Herbold.com

Our US-Subsidiary:

**Herbold Meckesheim USA
Resource Recycling Systems Inc.**
333 George Washington Highway,
USA-Smithfield,
Rhode Island 02917
Phone: + 1 401-232-3354
Fax: + 1 401-232-5425
info@HerboldUSA.net
www.HerboldUSA.net