

Mechanical Dryer / Centrifugal Washer

This unit is used as a dryer or as an intensive washer.

As a mechanical dryer, the machine operates as a centrifuge for films, regrind and mixed plastics: The material is mechanically dried and contaminants are simultaneously removed and discharged by the impact energy.

As an intensive washer, this unit uses a high volume of water to remove contaminants such as paper labels (pulp) from the fraction.

The machine consists of a housing in which a high-speed agitator rotates, a stainless steel polygonal shaped screen basket, double external bearings, and a pneumatic cleaning system for the screen surface with flushing device.

The machine consists of a housing in which a high-speed agitator rotates, a polygonal shaped screen basket made of stainless steel, double external bearings, and a pneumatic cleaning device for the screen surface with rinsing device. In the case of heavily contaminated feed material or materials with a high percentage of paper, a cleaning an automatic mechanical cleaning scraper is used on the exterior surface of the screen drum.

Special features:

- Higher drying efficiency due to an optimized paddle-shape and position.
- 50% higher drying performance due to design modifications.
- Better accessibility due to opening on both sides of the of the housing cover. No need for a forklift or crane to lift the cover.
- Re-design of the screens:
 - Split elements both at the circumference and in the length.
 - Use of non-perforated elements in case of increased wear due to particularly abrasive material.
 - Optional specially hardened screens.
- Re-design of the paddles:
 - Replaceable paddles made of standard wear-resistant material.
 - Wear-resistant coating for particularly abrasive material.
- Housing (starting with T 1015) is galvanized, no corrosion problems.
- Forced feeding through screw hopper for materials with poorly flowing properties.



Fig. 2: HVST 150/150

Step Dryer of the HVST 150/150 Series

The vertical step dryer consists of a multi-step rotor dewatering the material with the help of a screen basket. The granulate / material water mixture is introduced into the machine from the bottom and is transported upwards due to conveying paddles. The diameter of the rotor increases in the individual stages from the bottom to the top. In the lower area (where existing water can easily be evacuated) there are only slight circumferential speed differences; in the upper step, drying is executed with maximum circumferential speed. The HVST 150/150 is ideal for drying regrind or granulate of all thermoplastics such as polycarbonate, polyethylene, polyamide, polypropylene, polystyrene. The machine is recommended for drying brittle plastics with low material loss due to fines. The step dryer yields residual humidities ranging from 0.4 – 0.006 weight %.



Agricultural film

PET bottles

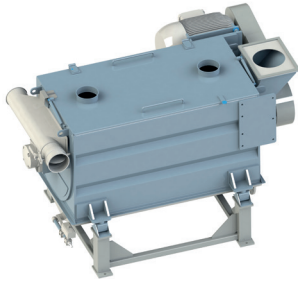
Contaminated Big Bags

HDPR material

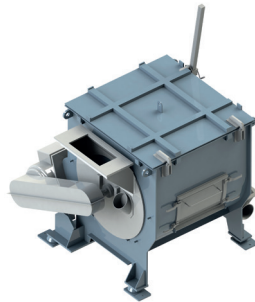
Technical data:

Model	T 508	T 800	T 1015	T 2015	T 2016	T 2015 S	HVST 150/150
Screen basket diameter	500 mm	800 mm	900 mm	1200 mm	1200 mm	1200 mm	1500 mm
Working length	1200 mm	1800 mm	1450 mm	2300 mm	2300 mm	3600 mm	1600 mm
Drive	15-30 kW	30-37 kW	30-90 kW	55-132 kW	55-132 kW	160 kW	55 kW
Dimensions							
Length (A)	2300 mm	2700 mm	2600 mm	3600 mm	4400 mm	6350 mm	3200 mm
Width (B)	1500 mm	1800 mm	2400 mm	2600 mm	2000 mm	2350 mm	2240 mm
Height (C)	1500 mm	2200 mm	2200 mm	2300 mm	2200 mm	2200 mm	2450 mm
Height with open cover	2400 mm	3100 mm	3700 mm	4100 mm	3000 mm	4200 mm	—
Screen perforation (standard)	2,5 mm	2,5 mm	2,5 mm	2,5 mm	2,5 mm	2,5 mm	2,5 mm
Through up to (t/h)							
Rigid plastics	0,8	2,0	2,5	4,0	4,0	5,0	4,5
Films	0,4	0,8	1,0	1,8	1,8	2,5	—

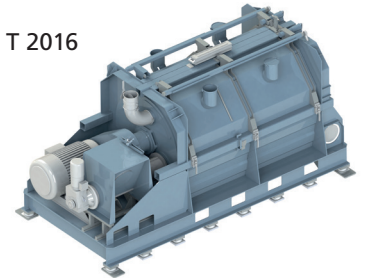
T 800



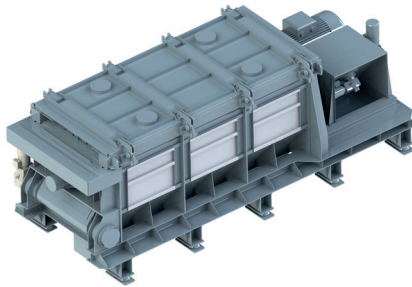
T 1015



T 2016



T 2015S



HVST 150/150



Our Product Range

Size Reduction

- › Shredder
- › Granulators
- › Pulverizing Systems

Washing / Separation Systems & Components

- › Pre-washing Units
- › Friction Washers
- › Separation Tanks and Hydrocyclones
- › Mechanical and Thermal Drying
- › Water Processing

Agglomeration

- › Plastcompactors

Service

- › Parts and Overhauls
- › Inspections and Trouble Shooting
- › Upgrades and Performance Service

Herbold Meckesheim GmbH • Fon: + 49 6226 932-0 • Mail: herbold@herbold.com • Web: www.herbold.com

Herbold Meckesheim USA • Fon: + 1 401 597 5500 • +1 888 612 RRSI (7774) • Mail: info@herboldusa.com • Web: www.herboldusa.com

Specifications are not binding and subject to change without notice. 02 / 2023